

THE PARTI LINE



©MCPCA 2008

~ *One Year Anniversary Edition* ~

“ANY POODLE REGARDLESS OF COLOR, THAT EXHIBITS EXEMPLARY HEALTH TEMPERAMENT AND CONFORMATION DESERVES A VENUE IN WHICH TO BE VALIDATED”

The MCPCA (Multi-Colored Poodle Club of America) Official Newsletter
A UKC Sanctioned Club since May 5, 2005

From The President's Desk.....



| <i>In This Issue:</i> | Page |
|--|------|
| <i>From The President's Desk</i> | 1 |
| <i>Notice To Members/ Club Address</i> | 2 |
| <i>Member Spotlight</i> | 3,4 |
| <i>Poodle Slippers</i> | 5 |
| <i>One Year Anniversary</i> | 6 |
| <i>Breeder and Show Brags</i> | 7-9 |
| <i>Health Testing Brags</i> | 10 |
| <i>Practical Poodle Postscript</i> | 11 |

This is the first anniversary edition of the *Parti Line* and on behalf of the club, I can not praise the newsletter staff enough for the incredibly professional newsletter they have produced over the last year. The newsletter has arrived on time each month and it is a product which is attractive and full of interesting information. I look forward, as I am sure all of you do, to receiving it each month.

It has been wonderful to see how active our membership is with their dogs in a wide variety of venues. I wish that many of you could take just a little bit of time and devote it to your club. I know that as President I haven't done as much as I would like to. I managed to get a first draft of the by-law amendments written and it has died from there.

I will be retiring as President this year to take over the Treasurer's job if that is the consensus of the club. Judy has served for two terms and can not run for treasurer again according to our by-laws. Since I only live 30 minutes away from Judy it would make sense for me to become treasurer so that we don't have to change all the bank accounts.

That leaves me with a topic that I have previously addressed in a message to the chat group and about which I received ZERO comments, “the nominating committee” which must be appointed at this month's meeting. If three people do not step forward to volunteer for the committee everything else will be a moot point, because there will be no one to search for a new president. I will not run again because I get enthused about activities when other people are enthused. Right now, except for a few people, I sense little enthusiasm about this club or its future. We are all adults. If you feel that this club is a worthwhile venture, then please step up to the plate and make a commitment to its future.

Sincerely,
Maryann

Newsletter Staff

Lina Wainiola
Judy Schmidt
Gina K Wainiola
Jennifer Girard
Maryann Beauchene
Gloria Ogdahl
Patty Reid
Michelle Golding
Ruth Parulis

Each member of the Staff is assigned responsibility for specific content and news articles.

NOTICE TO ALL MEMBERS

We have some important things to discuss at our next meeting to help the club keep moving forward.

Please try to set aside some time, even if *just for a few minutes*, to join in on this upcoming meeting which will be Monday evening, November 3, at 9:00 p.m. EST



Watch for the announcement on the MCPCA Chat for instructions on how to dial-in to the meeting.

It's really quite easy....

Please give it a try!

We look forward to you being there!!

CLUB WEBSITE ADDRESS

www.multicoloredpoodleclubofamerica.org

SEE YOU THERE !!!!

Send all photos and updates

to

Jacqui Mcleay

jacqui@kiradapoodles.com

Next Meeting
-Monday-
November 3, 2008
9:00 p.m. EST



©MCPCA 2008

MEMBER SPOTLIGHT

This month's "Member Spotlight" takes us to Louisiana, a state located in the Gulf coastal region of the U.S. Traveling inland to North Central Louisiana, we enter what is also called the "Crossroads Region." This region is known to be rich in physical and cultural contrasts. It is in this area of prairies, piney hill country and swamp lands that we come across the small town of Spearsville, LA. This location is home to **Jennifer Girard**, MCPCA member, contributing researcher/writer for "The Parti Line" newsletter and owner of "**Jenlane Poodles.**"



Jennifer and Lizzie

Concerning her home and life, Jennifer wrote,....."Spearsville is a small town. When I say small, I mean a population of less than 200 and pretty much in the middle of nowhere. My kennel name JenLane, comes from my name Jennifer(**Jen**) and Alana (**Lane**). I live with my husband, Larry, daughter, Makenzy (4 years old) and son, Ian (2 years old). We reside on family land consisting of over 300 acres....."



Daughter, Makenzy



Son, Ian

We get to enjoy country living and nature at its finest. I love it. There's nothing compared to seeing a family of deer up close or hearing the hoot owls and coyotes at night. My parents live up the hill from us and raise cattle. This has its pros and cons, one of the cons being cow poop, which is like a magnet for the poodles. It never fails that after the poodles have a bath, someone has to go roll in the stuff!"

Jennifer calls herself a "full time mom" to human and fur kids. She left her full time job as a Bank Customer Service Rep, to stay at home with her children, when her son was 6 months old. She explained.... "I had enough of dealing with no show and neglectful babysitters, so decided I needed to stay at home with my babies." During that time she completed college and earned a BS in Human Resources Management. Jennifer is currently working on her MBA. It is her goal to complete her MBA and when her children start school she would like to pursue a career as a Human Resource Manager at an animal hospital or veterinary office. Jennifer presently works on a "as needed basis" at the bank where she was previously employed fulltime. She wrote.... "I usually fill in for tellers or get stuck doing the jobs no one else wants to do. I am also a Mary Kay Independent Beauty Consultant on a part time basis. My life and hobbies are centered around my kids and dogs. I also enjoy reading, sewing, baking, going on 4-wheeler rides, bike riding and going on walks in the woods."

*Next month,
The Parti Line
"Member Spotlight"
will introduce
Jacqui McLeay*

Jennifer grew up in a family of dog enthusiasts. She explained..... “Growing up, my dad always had hunting dogs around. Mostly Treeing Walkers, Beagles and Rat Terriers. It was always so exciting to go hunting with the dogs. Mainly because the dogs always made it much more fun. As I got older, I talked about getting a standard poodle. I wanted to train it to hunt. Well, standard poodles aren’t seen a whole lot around here and they sure aren’t seen hunting. My dad and brother just laughed at the idea. I wanted to prove to them so bad that standard poodles could hunt.”

Well poodles have now owned Jennifer for over 7 years. Bayley(a Toy poodle), 7 ½ years old, was her first poodle. Jennifer described her poodle family in this way.....“At 4lbs, Bayley is the only Toy poodle in the house and he rules the roost. He pretty much gets his way all the time. He doesn’t like to get his feet wet. He refuses to go outside when it’s anything but warm and sunny. He loves riding in the car or on the 4-wheeler and he shares my pillow with me every night. Almost 2 years ago, I got my first Standard poodle. After that I was hooked. I now own Miniature and Standard poodles in both solid and multi colors. I happily suffer from MPS.”



Bayley

One year ago Jennifer decided to start showing and breeding poodles. She wrote.....“This decision to start showing and breeding poodles sent me on the quest to learn everything I could about poodles, which is why I joined MCPCA. Although I’m still a newbie at showing and breeding, I’ve been involved with dogs and other animals my entire life. I’ve been active in everything from dabbling with showing cattle to fostering homeless dogs and cats.....



Flair



Avery



Haley

My future breeding related goals entail producing Miniature and Standard poodles which are healthy, have proper conformation and excellent temperaments. I am currently working at completing health testing on my breeding prospects. I would also like to participate in all sorts of dog sports, but especially agility and hunting. Hopefully one day I will have a poodle that hunts better than my brother’s dogs. ☺ With two small children, showing and participating in dog events isn’t easy, especially since events close by are hard to come by. However, I’m hoping to participate in something soon. Until then, we will continue to train and play around the house.”

Jennifer’s enthusiasm for poodles is clearly evident in her description of what she enjoys most about her own poodles. She wrote..... “I love the intelligence and social nature of poodles. They are so full of life. My poodles have different interests ranging from swimming in the pond or kiddie pools, playing ball to just being couch potatoes. With poodles around, there is never a dull moment.”



Roscoe

Poodle Slippers....Crochet Pattern

Materials: Size G crochet hook
4-oz knitting worsted yarn
One pair inner soles
1/8 yard turquoise felt
Lightweight cardboard
Scraps of black and white felt.
Sequins and beads

Abbreviations:

ch...chain

sl st...slip stitch

sc...single crochet

inc...increase

sk...skip

Gauge: 4 sc equal 1 inch
4 rows equal 1 inch



Soles: Cut 4 pieces of cardboard same size as inner sole. Cut 4 pieces of turquoise felt slightly larger. Hold 2 pieces of cardboard and one inner sole together and cover with two pieces of felt, whipping edges together. Make other sole same way.

Top: Starting at toe, ch. 2.

Row 1: 5 sc in second ch from hook, ch 1, turn.

Row 2: 2 sc in first sc, * sc in next sc, 2 sc in next sc, repeat from * once more (8 sc), ch 1, turn.

Row 3: Sc in first 2 sc, * 2 sc in next sc, sc in next 2 sc, repeat from * once more (10 sc), ch 1, turn.

Row 4: 2 sc in first sc, sc in each sc to last sc, 2 sc in last sc (12 sc), ch 1, turn.

Rows 5 and 6: Sc in each sc, ch 1, turn.

Row 7: Sc in first 3 sc, 2 sc in next sc, sc in next 4 sc, 2 sc in next sc, sc in last 3 sc (14 sc), ch 1, turn.

Row 8: Repeat Row 6.

Rows 9 through 14: Repeat Rows 4, 5, and 6 twice (18 sc).

Row 15: Make 2 sc in the 4th, 8th, 11th and 15th sc (22 sc). Work 3 rows even.

Side Piece: Work first 7 sc, ch 1, turn. Work these sts, inc 1 st at inner edge every 4th row 4 times. Work even on 11 sc until piece will reach to center back of sole. Fasten off. Sk center 8 sc, join yarn in next sc, ch 1, sc in same sc, and next 6 sc. Work other side piece to correspond

Ears: (Make 4) - Starting at tip, ch 4.

Row 1: Sc in second ch from hook and each ch across (3 sc), ch 1, turn.

Row 2: Sc in first sc, 2 sc in next sc, sc in last sc (4 sc), ch 1, turn.

Row 3: Inc in first and last sc (6 sc). Work 9 rows even.

Rows 13, 14 and 15: Sk first sc, sc in each remaining sc, 3 sc remain.

Fasten off.

Finishing: Sew top to sole, sew back seam. Cut 2 strips of felt 3/4 inch wide and long enough to fit over slipper above edge of instep. Trim with sequins and sew in place. Fold top of ears lengthwise and sew to corners of instep. Cut circles of black and white felt, cut a V in side of black felt. Sew black felt over white felt with sequin at center for each eye. Cut a semi-circle of black felt and sew over top of slipper for nose. Wind yarn 50 times over 4 fingers. Tie securely at center, clip loops and sew to edge of instep. Work 1 row sl st around top edge, holding it in to fit, or draw a length of round elastic through edge to keep it snug.

“The Parti Line” just celebrated it’s one year anniversary. So the newsletter staff would like to invite MCPCA members old and new to take the time to look back on the news, articles, events, births, brags and remembrances the year has produced.

- *Exciting Specialty results and photos (UPBA and UKC Premier Specialty highlights)*
- *Health and dog safety related articles*
- *Club changes, contact info and updates*
- *Website changes and contact info.*
- *Important Multi Colored show result milestones (UKC,AKC,CKC)*
- *Performance and International show milestones and news.*
- *Articles, recipes, and projects to tweak and satisfy our creative natures*
- *Tributes to those we have loved and lost*
- *Introductions to new Multi Colored companions*
- *Current health testing updates from breeders*
- *Current litter news from breeders*
- *Updates on available poodle health tests and articles explaining health tests*



Not so long ago at the monthly meetings precluding the publication of the first ***“The Parti Line”***, the idea was discussed regarding whether a newsletter would be something the club would like to see happen. Those present at that meeting agreed to go ahead with the project and a newsletter committee was formed. A name contest was organized by which a name could be selected for the newsletter. Among the many suggestions, ***“The Parti Line”*** suggested by MCPCA members, Lee and Linda Beringsmith, got the most votes, thus becoming the official name of the club newsletter.

“The Parti Line” newsletter committee has its own private chat group where ideas and deadlines are suggested and discussed. The club President, Vice President and Director are also involved in the newsletter discussion group. Presently, as in the past, MCPCA members are invited and encouraged to join the newsletter staff if they are interested. Currently the newsletter design, layout and formatting for publication is taken care of by Gina Wainiola. The acting MCPCA President sends in a “Presidents Message” once a month. Monthly requests are also sent to the Membership Secretary for new member updates. There are periodically reminders sent to the club “CHAT” to invite members to share their ideas, articles, show and health testing news, litter updates, member activities and special remembrances so that they may be included in the newsletter. Members may send newsletter contributions at any time on their own simply by submitting information to any of the newsletter staff so that it can be prepared for publication. At present Gloria Ogdahl tries to keep the newsletter current with show news and health testing brags, Michelle Golding is in charge of special remembrance tributes and Jennifer Girard researches and writes the Practical Poodle Postscripts section. Lina Wainiola sends out invitations to members regarding the “Member Spotlight” section. When members agree to be interviewed they are then sent a basic outline of questions which they can expand upon in any way they wish. The information is then transformed into a article form and sent back to the individual being interviewed for approval. Each member who is interviewed is encouraged to tell the membership as much as they can about themselves, their area, their poodles and their poodle related goals so that the reader can feel as if they were in that area visiting with the MCPCA member personally. Those interviewed are also encouraged to include photos to accompany their article.

When the newsletter information is all complete it is then sent out to all the newsletter staff for editing. Those newsletter staff who do most of the editing are Judy Schmidt, Maryann Beauchene, Patty Reid and Ruth Parulis. After proofreading is complete, MCPCA members, receive their copies of the newsletter virtually free from errors.

Thanks to all our MCPCA member contributors and staff, the newsletter is proving to be an informative and interesting educational tool. Not only does it showcase all the dedication and hard work of MCPCA members and their multi colored poodles, it also informs the public about MCPCA, its members and the versatility of Multi Colored poodles. Each issue of the Parti Line is available to the public through the club’s website and the newsletter staff has received many positive comments regarding the newsletter content from non-MCPCA members who have viewed the site and read the newsletter.



HAPPY 1st ANNIVERSARY
“PARTI LINE”



AND WISHING IT MANY MORE TO COME.

Breeder & Show Brags.....

Congratulations Maggie Laney

Central Valley Rat Terrier Multi Breed Shows Oct. 11, 2008
Grand Ch. Highfalutin' Hush-Hush (m/c) took BOB,
Gun Dog Group 1 and Reserve BIS.



Ch. Highfalutin' Hanky Panky (m/c) attained her GRAND
Championship.

Highfalutin' Zacharia Rainier (solid), co owned with Rachael Hemstad
of Washington, achieved his UKC CHAMPION title in just 4 shows.
He also got a Gun Dog Group 2nd and a Group 3rd. He is out of UKC
Ch. Alaman Highfalutin Hollywood (solid) and UKC Ch. Highfalutin
Half And Half (m/c). He starts his AKC career this month with Kay
Palade-Peiser.



Tulare Multi Breeds Shows Sept 27, 2008
UKC Grand Ch. Highfalutin' Hits The Spot took BOB,
Gun Dog Group 1 and **Best In Show**.

*Please remember to
share your show news
and health testing
brags with us.*

Congratulations Michelle Golding and Feather

Sunridge's Borrow Angel (AKA) "Feather"
won her Champion title on Sept. 20th in Hickory, NC



BREEDER & SHOW BRAGS CON'T.....

Congratulations Claudia Pendlay

October 18 and 19 Great Smoky Mountain Dog Club shows.

Parti male Sisco's Masquerade Parti mini

He was the only multicolor mini being shown, there were no toys

4 BOB 2 group 3 and 1 group 4. He has all of his competition wins and now needs only 8 points to finish.

Solid Female Parti Time's Dandelion Wine (cream) who is parti factored (parti mother x parti factored father) mini

2 BOB (with competition in both mini and toy) 2 group 2.

She needs one competition win to finish.



News from Canada.....Congratulations Cilla and the gang

Paisley (Lets Go Crazy Paisley) got her novice Rally title at the Oshawa Obedience Club's show on Oct 05 and Rumor finished his Advanced title at the same show.

The following weekend we went to the Poodle Club of Canada's OBA and Rally trials and they both got 2 legs towards their Advanced and Excellent title respectively. Rumor had the distinction of being HIGH scoring Poodle at the Sunday Rally Trials with a 97 .

Jules (CAN UKC CH Paisleys Lets Get Nuts CD RA) (with his co-owner Pat) also finished his Rally advanced title at the PCC trials.

He now has 5 titles before his 2nd birthday.

Way to go Pat and Jules!



Please remember to share your show and health testing brags with us.



BREEDER & SHOW BRAGS CON'T.....

Congratulations Gloria Ogdahl

3 new UKC Champions.....
 Tintlet Anutta Silver Charm (Suri)
 Tintlet Shayna Maidela (Shayna)
 Tintlet Anutta Wild Child (Tess)

Suri finished her Championship late Sept and Shayna and Tess finished theirs in Athens, TN in Oct.

Tess also won the CH class once for her first Grand pass.

(GrCH Tintlet Petite Fille) GiGi who is co-owned with Hugerfords) was BB/Group 1 for both Saturday's shows (solids only entered on Sat) and Drum Roll.....**Best In Show!!** Show 2



Daughter Kelsey also showed her dogs.....

Rhiannon finished her UKC Championship,
 Rune got a Grand pass,
 and Sin got 2 passes.

Please remember to share your show and health testing brags with us.



Health Testing Brags

Mozaic Classic Deuce's Wild (Maverick)
OFA Hips....Good
OFA Legg-Calve-Perthes....Normal

Ref Mozaic Miss Marquette (Marquette)
OFA Legg-Calve-Perthes.....Normal

Lina and Gina Wainiola

Please remember to share your show and health testing brags with us.

Girard's Dreamin' Of An Oreo (Roscoe)
vWD - Normal
DM - Normal



Girard's Delightful Haley (Haley)
DM - Normal



Jennifer Girard

AKC Ch. Highfalutin' Hoodwinked At Kaylens
OFA Hip.....Prelim Excellent
OFA Thyroid.....Normal

UKC Ch. Highfalutin' Homage To Huffish
OFA Hip.....Prelim Good

Maggie Laney





The Parti Line

©MCPCA 2008

MCPCA
The Multi-Colored
Poodle Club of America

President:
Maryann Beauchene
pbeachene@sbcglobal.net

Vice President:
Claudia Pendlay
cpendlay@charter.net

Treasurer:
Judy Schmidt
mom71243@aol.com

Correspondence Secretary:
Bernard Ortiz de
Montellano
ph1251@yahoo.com

For membership information
and an application to join,
please contact
Membership Secretary:
Priscilla Suddard,
poodlewoman@myway.com

Director:
Gloria Ogdahl
gogdahl@verizon.net

PRACTICAL POODLE POSTSCRIPT

Degenerative Myelopathy

*Source: University of Missouri – Columbia College of Veterinary Medicine
<http://www.caninegeneticdiseases.net/DM/basicDM.htm>*

Degenerative myelopathy is a progressive disease of the spinal cord in older dogs. The disease has an insidious onset typically between 8 and 14 years of age. It begins with a loss of coordination (ataxia) in the hind limbs. The affected dog will wobble when walking, knuckle over or drag the feet. This can first occur in one hind limb and then affect the other. As the disease progresses, the limbs become weak and the dog begins to buckle and has difficulty standing. The weakness gets progressively worse until the dog is unable to walk. The clinical course can range from 6 months to 1 year before dogs become paraplegic. If signs progress for a longer period of time, loss of urinary and fecal continence may occur and eventually weakness will develop in the front limbs. Another key feature of DM is that it is not a painful disease.

Degenerative myelopathy begins with the spinal cord in the thoracic (chest) region. If we look under the microscope at that area of the cord from a dog that has died from DM, we see degeneration of the white matter of the spinal cord. The white matter contains fibers that transmit movement commands from the brain to the limbs and sensory information from the limbs to the brain.

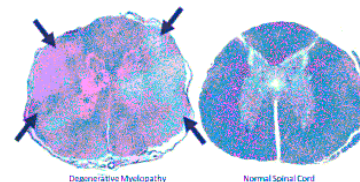
This degeneration consists of both demyelination (stripping away the insulation of these fibers) and axonal loss (loss of the actual fibers), and interferes with the communication between the brain and limbs. Recent research has identified a mutation in a gene that confers a greatly increased risk of developing the disease.

In regards to diagnosing degenerative Myelopathy, it is a diagnosis of elimination. We look for other causes of the weakness using diagnostic tests like myelography and MRI. When we have ruled them out, we end up with a presumptive diagnosis of DM. The only way to confirm the diagnosis is to examine the spinal cord under the microscope when a necropsy (autopsy) is performed. There are degenerative changes in the spinal cord characteristic for DM and not typical for some other spinal cord disease.

Any disease that affects the dog's spinal cord can cause similar signs of loss of coordination and weakness. Since many of these diseases can be treated effectively, it is important to pursue the necessary tests to be sure that the dog doesn't have one of these diseases. The most common cause of hind limb weakness is herniated intervertebral disks. The disks are shock absorbers between the vertebrae in the back. When herniated, they can cause pressure on the spinal cord and weakness or paralysis. Short-legged, long back dogs are prone to slipped disks. A herniated disk can usually be detected with X-rays of the spine and myelogram or by using more advanced imaging such as CT scan or MRI. Other diseases we should consider include tumors, cysts, infections, injuries and stroke. Similar diagnostic procedures will help to diagnose most of these diseases. If necessary, your veterinarian can refer you to a board certified neurologist who can aid in diagnosing degenerative myelopathy. A directory to a neurologist near you can be found at American College of Veterinary Internal Medicine website under the "Find a Specialist Near You" link.

There are no treatments that have been clearly shown to stop or slow progression of DM. Although there are a number of approaches that have been tried or recommended on the internet, no scientific evidence exists that they work. The outlook for a dog with DM is still grave. The discovery of a gene that identifies dogs at risk for developing degenerative myelopathy could pave the way for therapeutic trials to prevent the disease from developing. Meanwhile, the quality of life of an affected dog can be improved by measures such as good nursing care, physical rehabilitation, pressure sore prevention, monitoring for urinary infections, and ways to increase mobility through use of harnesses and carts.

In the section of a spinal cord from a dog who has died of DM (Left), the degeneration is seen as a loss of the blue color at the edges (arrows) compared with the spinal cord from a normal dog which is blue throughout (Right).



We're on the Web at.....

<http://multicoloredpoodleclubofamerica.org/index.html>